



LIGHT SPECS

APRIL 2021

| LOCATION | WHAT | QT | DESCRIPTION |
|----------------|-----------------------------|------------|--|
| BALCONY | Desk | 1x | AVOLITES PEARL EXPERT PRO WITH TOUCHWING [SOFTWARE VERSION 14.0] |
| | Dimmers | 42x | 2KW DIMMERCHANNEL |
| | | 6x | 2KW DIMMERCHANNEL ON STAGEFLOOR [NOT PATCHABLE] |
| | | 6x | 2KW DIMMERCHANNEL LEKO'S FRONT [NOT PATCHABLE] |
| STAGE | Conventional | 12x | PAR64 230V 1000W MFL [CP62 - SINGLY PATCHED] |
| | | 2x | PAR36 ACL-SET [2000W] |
| | | 4x | CATEYE [500W] |
| | | 6x | PAR64 230V 1000W FLOORCAN MFL [CP62] |
| | | 4x | SHOWTEC ACTIVE SUNSTRIP [500W - WITH STAND] |
| | Intelligent | 8x | MARTIN QUANTUM PROFILE [FIXED POSITION - IN TRUSS] |
| | | 4x | MARTIN QUANTUM PROFILE [ON THE FLOOR] |
| | | 12x | CLF CONAN RGBW LEDPAR WITH ZOOM 11 - 58 DEGREE [IN TRUSS] |
| | | 6x | CLF CONAN RGBW LEDPAR WITH ZOOM 11 - 58 DEGREE [FLOOR] |
| | Power | 2x | MARTIN ATOMIC STROBE 3000 [IN TRUSS] |
| | | 1x | 63A 3FASE CEE 230V/400V BEHIND STAGE - ACCES STAGERIGHT UPSTAGE |
| | | | DISTRIBUTION 1X63A CEE ->2X32A CEE BEHIND STAGE - ACCES STAGERIGHT UPSTAGE |
| | | | DISTRIBUTION 1X32A CEE ->6X 16A SHUKO |
| HALL | Conventional [Front] | 1x | LEKO ADB DW-104 [15-42DEG, 1000W, UPSTAGE CENTER] |
| | | 5x | STRAND HARMONY [15-28DEG], 1000W, STAGE RIGHT > STAGE LEFT] |
| | | 4x | PAR64 230V 1000W MFL, SIDE FRONT [CP62] |
| | Conventional | 1x | LEKO ADB DW-104 [15-42DEG, 1000W] |
| | | 4x | MARTIN QUANTUM PROFILE [FIXED POSITION - IN TRUSS] |
| | Intelligent | 14x | CLF CONAN RGBW LEDPAR WITH ZOOM 11 - 58 DEGREE |
| | | 2x | SWEFOG XEON II INTELLHAZAR [LIGHTING BALCONY & STAGE] |
| | Smoke | | |
| | Gels | | A VARIETY OF LEE COLOURGELS, SEE LIST |
| | Misc. | 1x | FLYBAR FOR BACKDROP UPSTAGE |
| | | | 6M WIDE - MAX. 12KG - BACKDROPS ONLY! - NO POINTLOADS! |



LIGHT SPECS - PATCH 1/4 CONVENTIONAL

APRIL 2021

4 DMX lines available:

A: Conventionals + Moving lights

B: Conans Stage + Quantum floor

C: Conans Hall

D: Guest [Empty]

CONVENTIONAL

| QT | DESCRIPTION | LOCATION | ADDRESS | PERSONALITY | REMARKS |
|----|--------------------|----------|-------------|-------------|---|
| 6X | PARCANS | STAGE | A-1 > A-6 | | UPSTAGE TRUSS [SINGLY PATCHED] |
| 6X | PARCANS | STAGE | A-7 > A-12 | | DOWNSTAGE TRUSS [SINGLY PATCHED] |
| 2X | ACL | STAGE | A-13 > A14 | | A-13 UPSTAGE TRUSS / A-14 DOWNSTAGE TRUSS |
| 4X | CATEYE | STAGE | A-15 > A-18 | | |
| 1X | FRONT PROFILE [DJ] | HALL | A-24 | | HALL > STAGE LEFT |
| 6X | FRONT PROFILE | FRONT | A-25 > A-30 | | STAGE RIGHT > STAGE LEFT |
| 2X | SIDE PAR | HALL | A-31 > A-32 | | 2X 2CH MIRRORED |
| 3X | TOP PAR | STAGE | A-34 > A-36 | | TOP LIGHTS |
| 6X | FLOOR | FRONT | A-37 > A-42 | | 6X FLOORCAN 4X PASSIVE SUNSTRIP |

* 6 FREE DIMMERCHANNELS ON THE FLOOR



LIGHT SPECS - PATCH 2/4 - STAGE

APRIL 2021

INTELLIGENT

| NR | DESCRIPTION | LOCATION | ADDRESS | PERSONALITY | REMARKS |
|----|-------------------------|----------|---------|-----------------------------------|-------------|
| 1 | SHOWTEC ACTIVE SUNSTRIP | STAGE | A-61 | 10 CHANNEL MODE - 10 DMX CHANNELS | ON FLOOR |
| 2 | SHOWTEC ACTIVE SUNSTRIP | STAGE | A-71 | 10 CHANNEL MODE - 10 DMX CHANNELS | ON FLOOR |
| 3 | SHOWTEC ACTIVE SUNSTRIP | STAGE | A-81 | 10 CHANNEL MODE - 10 DMX CHANNELS | ON FLOOR |
| 4 | SHOWTEC ACTIVE SUNSTRIP | STAGE | A-91 | 10 CHANNEL MODE - 10 DMX CHANNELS | ON FLOOR |
| 1 | MARTIN QUANTUM PROFILE | STAGE | A-101 | EXTENDED MODE - 27 DMX CHANNELS | IN TRUSS |
| 2 | MARTIN QUANTUM PROFILE | STAGE | A-128 | EXTENDED MODE - 27 DMX CHANNELS | IN TRUSS |
| 3 | MARTIN QUANTUM PROFILE | STAGE | A-155 | EXTENDED MODE - 27 DMX CHANNELS | IN TRUSS |
| 4 | MARTIN QUANTUM PROFILE | STAGE | A-182 | EXTENDED MODE - 27 DMX CHANNELS | IN TRUSS |
| 5 | MARTIN QUANTUM PROFILE | STAGE | A-209 | EXTENDED MODE - 27 DMX CHANNELS | IN TRUSS |
| 6 | MARTIN QUANTUM PROFILE | STAGE | A-236 | EXTENDED MODE - 27 DMX CHANNELS | IN TRUSS |
| 7 | MARTIN QUANTUM PROFILE | STAGE | A-263 | EXTENDED MODE - 27 DMX CHANNELS | IN TRUSS |
| 8 | MARTIN QUANTUM PROFILE | STAGE | A-290 | EXTENDED MODE - 27 DMX CHANNELS | IN TRUSS |
| 9 | MARTIN QUANTUM PROFILE | HALL | A-317 | EXTENDED MODE - 27 DMX CHANNELS | IN TRUSS |
| 10 | MARTIN QUANTUM PROFILE | HALL | A-344 | EXTENDED MODE - 27 DMX CHANNELS | IN TRUSS |
| 11 | MARTIN QUANTUM PROFILE | HALL | A-371 | EXTENDED MODE - 27 DMX CHANNELS | IN TRUSS |
| 12 | MARTIN QUANTUM PROFILE | HALL | A-398 | EXTENDED MODE - 27 DMX CHANNELS | IN TRUSS |
| 13 | MARTIN QUANTUM PROFILE | HALL | A-425 | EXTENDED MODE - 27 DMX CHANNELS | IN TRUSS |
| 14 | MARTIN QUANTUM PROFILE | HALL | A-452 | EXTENDED MODE - 27 DMX CHANNELS | IN TRUSS |
| 1 | MARTIN ATOMIC | STAGE | A-501 | 4 DMX CHANNELS | STAGE RIGHT |
| 2 | MARTIN ATOMIC | STAGE | A-505 | 4 DMX CHANNELS | STAGE LEFT |
| 1 | HAZER SWEFOG | BALCONY | A-509 | 1 DMX CHANNEL | |
| 2 | HAZER SWEFOG | STAGE | A-511 | 1 DMX CHANNEL | |



LIGHT SPECS - PATCH 3/4 - STAGE & FLOOR

APRIL 2021

INTELLIGENT

| NR | DESCRIPTION | LOCATION | ADDRESS | PERSONALITY | REMARKS |
|----|------------------------|----------|---------|---------------------------------|----------------|
| 1 | CLF CONANS | STAGE | B-1 | EXTENDED MODE - 21 DMX CHANNELS | IN TRUSS F & G |
| 2 | CLF CONANS | STAGE | B-22 | EXTENDED MODE - 21 DMX CHANNELS | IN TRUSS F & G |
| 3 | CLF CONANS | STAGE | B-43 | EXTENDED MODE - 21 DMX CHANNELS | IN TRUSS F & G |
| 4 | CLF CONANS | STAGE | B-64 | EXTENDED MODE - 21 DMX CHANNELS | IN TRUSS F & G |
| 5 | CLF CONANS | STAGE | B-85 | EXTENDED MODE - 21 DMX CHANNELS | IN TRUSS F & G |
| 6 | CLF CONANS | STAGE | B-106 | EXTENDED MODE - 21 DMX CHANNELS | IN TRUSS F & G |
| 7 | CLF CONANS | STAGE | B-127 | EXTENDED MODE - 21 DMX CHANNELS | IN TRUSS F & G |
| 8 | CLF CONANS | STAGE | B-148 | EXTENDED MODE - 21 DMX CHANNELS | IN TRUSS F & G |
| 9 | CLF CONANS | STAGE | B-169 | EXTENDED MODE - 21 DMX CHANNELS | IN TRUSS H & D |
| 10 | CLF CONANS | STAGE | B-190 | EXTENDED MODE - 21 DMX CHANNELS | IN TRUSS H & D |
| 11 | CLF CONANS | STAGE | B-211 | EXTENDED MODE - 21 DMX CHANNELS | IN TRUSS H & D |
| 12 | CLF CONANS | STAGE | B-232 | EXTENDED MODE - 21 DMX CHANNELS | IN TRUSS H & D |
| 15 | MARTIN QUANTUM PROFILE | FLOOR | B-255 | EXTENDED MODE - 27 DMX CHANNELS | STAGE FLOOR |
| 16 | MARTIN QUANTUM PROFILE | FLOOR | B-282 | EXTENDED MODE - 27 DMX CHANNELS | STAGE FLOOR |
| 17 | MARTIN QUANTUM PROFILE | FLOOR | B-309 | EXTENDED MODE - 27 DMX CHANNELS | STAGE FLOOR |
| 18 | MARTIN QUANTUM PROFILE | FLOOR | B-336 | EXTENDED MODE - 27 DMX CHANNELS | STAGE FLOOR |



LIGHT SPECS - PATCH 4/4 HALL & FLOOR

APRIL 2021

LED

| NR | DESCRIPTION | LOCATION | ADDRESS | PERSONALITY | REMARKS |
|----|-------------|----------|---------|---------------------------------|-------------|
| 1 | CLF CONANS | HALL | C-1 | EXTENDED MODE - 21 DMX CHANNELS | IN TRUSS C |
| 2 | CLF CONANS | HALL | C-22 | EXTENDED MODE - 21 DMX CHANNELS | IN TRUSS C |
| 3 | CLF CONANS | HALL | C-43 | EXTENDED MODE - 21 DMX CHANNELS | IN TRUSS C |
| 4 | CLF CONANS | HALL | C-64 | EXTENDED MODE - 21 DMX CHANNELS | IN TRUSS A |
| 5 | CLF CONANS | HALL | C-85 | EXTENDED MODE - 21 DMX CHANNELS | IN TRUSS A |
| 6 | CLF CONANS | HALL | C-106 | EXTENDED MODE - 21 DMX CHANNELS | IN TRUSS E |
| 7 | CLF CONANS | HALL | C-127 | EXTENDED MODE - 21 DMX CHANNELS | IN TRUSS E |
| 8 | CLF CONANS | HALL | C-148 | EXTENDED MODE - 21 DMX CHANNELS | IN TRUSS E |
| 9 | CLF CONANS | HALL | C-169 | EXTENDED MODE - 21 DMX CHANNELS | IN TRUSS E |
| 10 | CLF CONANS | HALL | C-190 | EXTENDED MODE - 21 DMX CHANNELS | IN TRUSS E |
| 11 | CLF CONANS | HALL | C-211 | EXTENDED MODE - 21 DMX CHANNELS | IN TRUSS B |
| 12 | CLF CONANS | HALL | C-232 | EXTENDED MODE - 21 DMX CHANNELS | IN TRUSS B |
| 13 | CLF CONANS | HALL | C-253 | EXTENDED MODE - 21 DMX CHANNELS | IN TRUSS B |
| 14 | CLF CONANS | HALL | C-274 | EXTENDED MODE - 21 DMX CHANNELS | IN TRUSS B |
| 15 | CLF CONANS | FRONT | C-295 | EXTENDED MODE - 21 DMX CHANNELS | GRIT |
| 16 | CLF CONANS | FRONT | C-316 | EXTENDED MODE - 21 DMX CHANNELS | GRIT |
| 17 | CLF CONANS | FRONT | C-337 | EXTENDED MODE - 21 DMX CHANNELS | GRIT |
| 18 | CLF CONANS | FRONT | C-358 | EXTENDED MODE - 21 DMX CHANNELS | GRIT |
| 19 | CLF CONANS | FLOOR | C-379 | EXTENDED MODE - 21 DMX CHANNELS | STAGE FLOOR |
| 20 | CLF CONANS | FLOOR | C-400 | EXTENDED MODE - 21 DMX CHANNELS | STAGE FLOOR |
| 21 | CLF CONANS | FLOOR | C-421 | EXTENDED MODE - 21 DMX CHANNELS | STAGE FLOOR |
| 22 | CLF CONANS | FLOOR | C-442 | EXTENDED MODE - 21 DMX CHANNELS | STAGE FLOOR |
| 23 | CLF CONANS | FLOOR | C-463 | EXTENDED MODE - 21 DMX CHANNELS | STAGE FLOOR |
| 36 | CLF CONANS | FLOOR | C-484 | EXTENDED MODE - 21 DMX CHANNELS | STAGE FLOOR |



LIGHT SPECS - HARTING

APRIL 2021

HARTING

| SHUKO | HARTING A | HARTING B | HARTING C | HARTING D | HARTING E | HARTING F | HARTING G | HARTING H |
|-------|----------------|--------------------------|---------------------------------|------------------------|---------------------------------|--------------------|------------------------|------------------------|
| 1 | | DJ PROFILE [DMX A-24] | PC SIDE FRONT [DMX A-33] | CATEYE 4 [DMX A-18] | PC SIDE FRONT [DMX A-33] | | CATEYE 1 [DMX A-15] | CATEYE 3 [DMX A-17] |
| 2 | | | PAR SIDE FRONT [DMX A-32] | PAR 12 [DMX A-12] | PAR SIDE FRONT [DMX A-32] | | CATEYE 2 [DMX A-16] | PAR 7 [DMX A-7] |
| 3 | | | PAR SIDE FRONT [DMX A-31] | PAR 11 [DMX A-11] | PAR SIDE FRONT [DMX A-31] | PAR 3 [DMX A-3] | PAR 6 [DMX A-6] | PAR 8 [DMX A-8] |
| 4 | | | | PAR 10 [DMX A-10] | TOP PAR STAGE [DMX A-34] | PAR 2 [DMX A-2] | PAR 4 [DMX A-4] | PAR 9 [DMX A-9] |
| 5 | | | | | TOP PAR STAGE [DMX A-35] | PAR 1 [DMX A-1] | PAR 5 [DMX A-5] | |
| 6 | | | | | TOP PAR STAGE [DMX A-36] | ACL [DMX-13] | | ACL [DMX A-14] |
| 7 | VS [CONANS] | VS [CONANS] | VS [CONANS] | | VS [CONANS] | VS [CONANS] | VS [CONANS] | VS [CONANS] |
| 8 | VS [FANS] | VS [SPOTS] | VS [FANS] | | VS [FANS] | VS [SPOTS] | VS [SPOTS] | VS [SPOTS] |

DE HELLING



De Helling

Helling 7

3523CB Utrecht

The Netherlands

+31[0]30 22 1 99 44

production@dehelling.nl

www.dehelling.nl

LIGHT SPECS - GELS

APRIL 2021

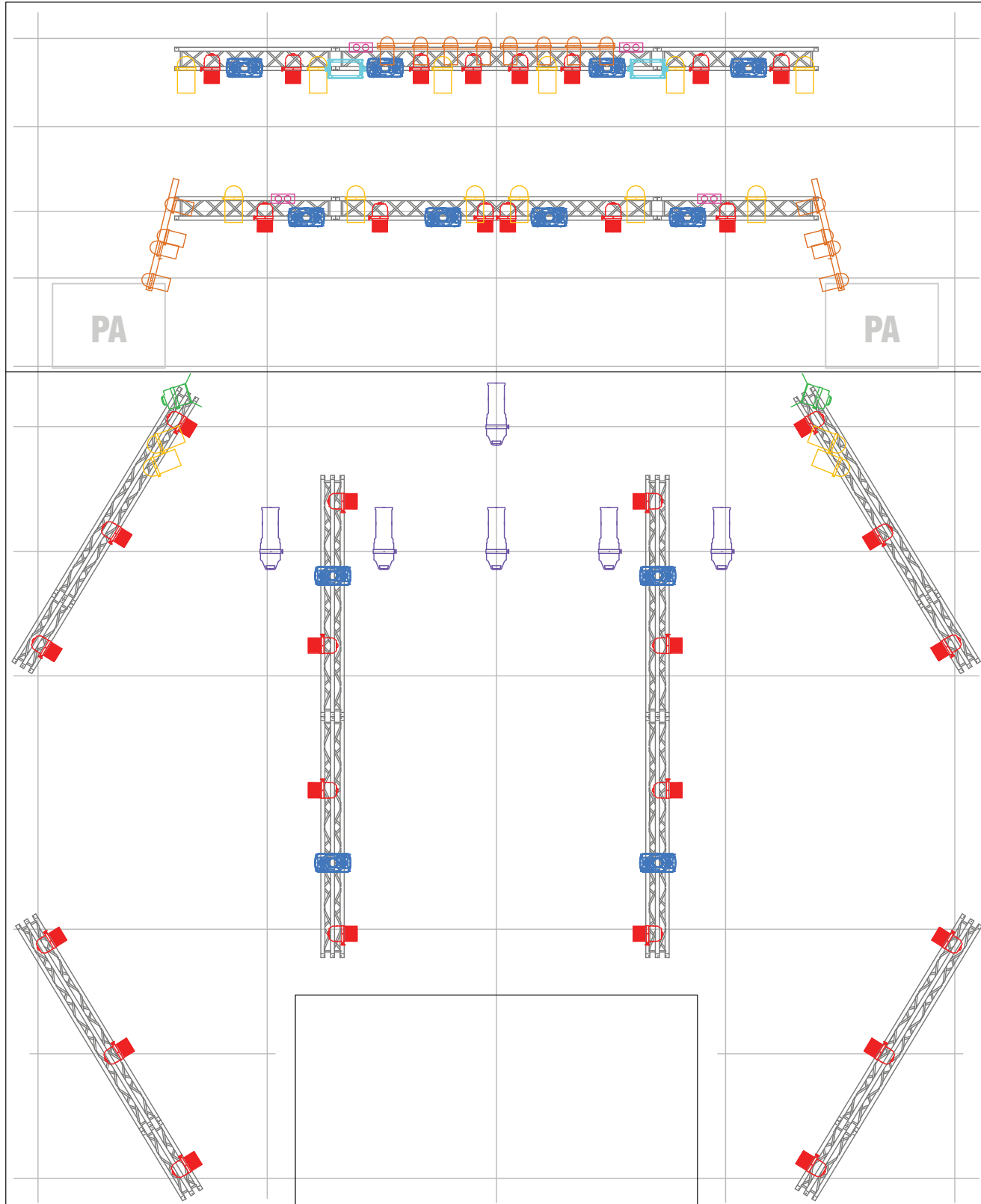
GELS

| LEE NR | LEE NR | LEE NR | LEE NR | LEE NR | LEE NR | LEE NR | LEE NR | LEE NR |
|--------|--------|--------|--------|--------|--------|--------|--------|--------|
| 8 | 79 | 111 | 127 | 147 | 170 | 200 | 220 | 715 |
| 15 | 89 | 113 | 128 | 148 | 174 | 201 | 228 | 765 |
| 19 | 90 | 115 | 129 | 151 | 180 | 202 | 241 | 777 |
| 21 | 100 | 116 | 132 | 152 | 181 | 203 | 243 | 789 |
| 22 | 101 | 117 | 134 | 153 | 182 | 204 | 256 | 793 |
| 26 | 102 | 118 | 135 | 156 | 183 | 205 | 322 | 797 |
| 27 | 103 | 119 | 136 | 157 | 193 | 206 | 327 | 995 |
| 46 | 104 | 120 | 137 | 158 | 194 | 207 | 328 | |
| 48 | 105 | 121 | 139 | 161 | 195 | 208 | 332 | |
| 58 | 106 | 122 | 141 | 164 | 196 | 209 | 343 | |
| 71 | 107 | 124 | 142 | 165 | 197 | 210 | 366 | |
| 75 | 110 | 126 | 143 | 166 | 198 | 219 | 707 | |











LIGHT SPECS - PLOT

FEBRUARI 2021



Legenda

-  **Martin Quantum Profile**
Standard mode - 23 channels
-  **CLF Conan**
Extended mode - 21 channels
-  **Martin Atomic 3000**
With effects - 4 channels
-  **PAR64 // 1000W**
MFL / CP62
-  **Profile // 1000W**
15° - 35°
-  **Fresnel // 1000W**
-  **Showtec Compact Blinder**
-  **ACL // 8x 250W**
4-bar PAR36